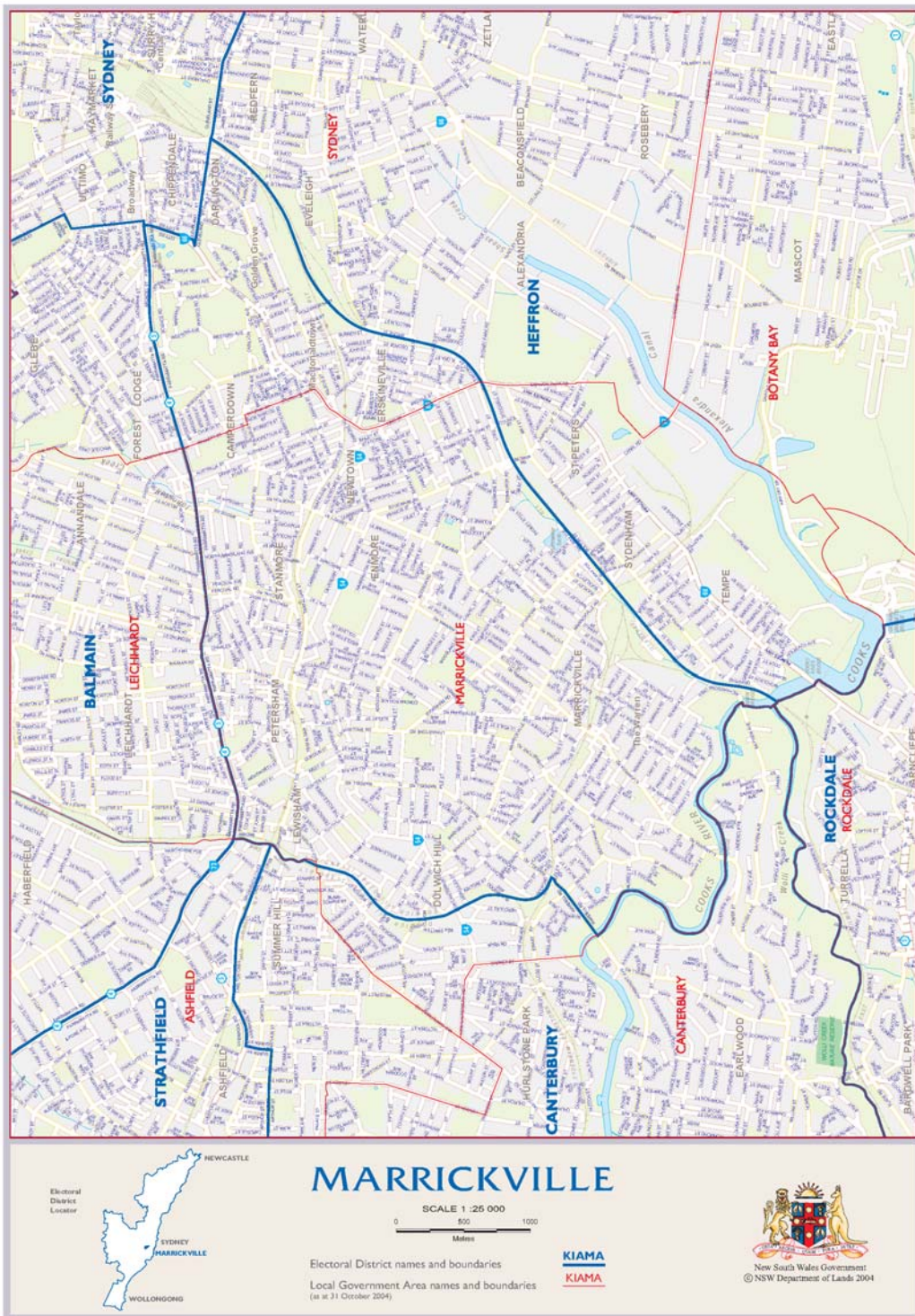


NSW Parliamentary Library Research Service

Electorate Profile Series

Marrickville



MARRICKVILLE (ALP)

	Rank	Per Cent	Number
Population			
Total Population	17		73,696
Population density (persons per square kilometre)	3		5,047.29
Area (square kilometres)	91		14.6
Proportion of Australian citizens aged 18 and over	85	76.51%	
Number of Australian citizens aged 18 and over	6		48,127
Persons who changed address since 2001	4	43.50%	32,060
Persons aged under 5	74	5.54%	4,086
Persons aged between 5 and 14	91	6.99%	5,154
Persons aged between 15 and 24	24	14.71%	10,843
Persons aged between 25 and 64	4	63.31%	46,653
Persons aged 65 and over	80	9.44%	6,959
Religion			
Persons of Christian religion	89	47.45%	34,968
Persons of Catholic religion	74	23.60%	17,395
Persons of Anglican religion	84	9.79%	7,218
Persons of non-Christian religion	21	11.52%	8,488
Persons of Islamic religion	22	2.53%	1,865
Persons of Buddhist religion	11	5.28%	3,890
Persons of Jewish religion	12	0.47%	343
Persons of no religion	1	26.16%	19,281
Ethnicity			
Aboriginals and Torres Strait Islanders	53	1.54%	1,136
Persons born overseas	27	33.20%	24,464
Persons born in UK and Ireland	39	4.86%	3,584
Persons born in Southern Europe	7	2.80%	2,064
Persons born in South Eastern Europe	9	4.12%	3,034
Persons born in South East Asia	12	6.26%	4,616
Persons born in the Middle East	24	1.71%	1,258
Persons born in North East Asia	30	3.08%	2,271
Persons born in Southern Asia	33	1.36%	1,003
Persons born in non-English speaking countries	26	24.17%	17,811
Persons with both parents born overseas	26	43.22%	31,854
Persons with at least one parent born overseas	25	54.62%	40,253
Persons not fluent in English	15	7.29%	5,374
Persons speaking a language other than English at home	26	29.39%	21,660
Households and Families			
Traditional families (two parents with children)	86	28.92%	4,724
Single parent families	56	10.06%	1,644
Couple families (without children)	10	44.24%	7,227
Lone person households	5	32.05%	9,058
Income			
Families with weekly income below \$500	63	10.89%	1,779
Families with weekly income from \$500 to \$999	71	15.64%	2,554
Families with weekly income from \$1000 to \$1399	79	14.61%	2,387
Families with weekly income from \$1400 to \$1999	51	14.72%	2,405
Families with weekly income of \$2000 and above	20	33.25%	5,431

MARRICKVILLE (ALP)

	Rank	Per Cent	Number
Labour Force			
Employed persons aged 15 years and over	23	60.68%	39,118
Unemployment rate	56	5.33%	2,203
Labour force	20	64.10%	41,321
Women in the labour force	4	48.68%	20,113
Employees (Government Admin Defence)	14	5.73%	2,241
Employees (Agriculture Fishing Forestry)	87	0.15%	59
Employees (Health and Community Services)	46	10.74%	4,202
Employees (Education)	5	10.37%	4,055
Employees (Manufacturing)	66	7.97%	3,119
Employees (Finance and Insurance, Property and Business Services)	16	22.21%	8,688
Persons employed in professional occupations	11	43.09%	16,855
Persons employed as tradespersons or labourers	81	11.53%	4,509
Education			
Persons with tertiary education qualifications	13	37.93%	24,452
Persons with trade qualifications	86	9.89%	6,372
Persons with no qualifications	81	36.41%	23,473
Persons attending infant, primary or secondary school	92	7.51%	5,531
Infant, primary or secondary school students attending private schools	45	34.70%	1,919
Persons attending a tertiary education institution	1	12.59%	9,279
Persons with highest level of school completed Year 10 or below	86	20.30%	13,087
Transport			
Persons using public transport to travel to work	1	33.79%	13,216
Households with two or more motor vehicles	92	20.04%	6,341
Dwellings			
Tenant dwellings	6	43.14%	13,652
Owner or purchaser dwellings	90	44.05%	13,940
Flat or apartment dwellings	10	38.83%	12,288
Public housing	55	3.20%	1,012
Dwellings which are caravans	80	0.04%	14
Other			
Dwellings with an internet connection	36	59.57%	18,853
Persons who need assistance with core activities	67	3.67%	2,704
Persons who contributed to voluntary work	59	15.50%	9,991
Selected Medians			
Median age of persons	75		34
Median monthly housing loan repayment	20		\$2,000
Median weekly rent	22		\$260
Median weekly individual income	17		\$597
Median weekly family income	23		\$1,541
Median weekly household income	27		\$1,176
Average household size	90		2.2

This paper analyses data from the 2006 Census of Population and Housing for the NSW State Electoral Districts (SED). Data was provided by the Australian Bureau of Statistics in relation to the state electoral boundaries as redistributed in 2007. A profile is included for each SED giving details of population and other selected census characteristics. The rank of the SED when compared to other SEDs for each census characteristic is also shown. Definitions of the various characteristics are provided in the publication: *NSW Electorate Profiles: 2007 Redistribution*, Background Paper No 4/09 located at the NSW Parliament's website: <http://www.parliament.nsw.gov.au/prod/parlment/publications.nsf/V3ListRPSubject>

Information on the: median age; median monthly housing repayments; median weekly rent; median weekly individual income; median weekly family income; median weekly household income and mean household size for SED is included at the end of the table. A political party affiliation is identified for each SED.

© NSW Parliamentary Library 2009